



WASEDA University

Waseda University's Global Engagement Strategy

A.I.E.A. Annual Meeting
San Francisco, CA
Jan 22, 2019

Anthony Johnson
WASEDA USA
Regional Manager



WHO WE ARE



About WASEDA University

- WASEDA University: private university founded in 1882 by Mr. Shigenobu OKUMA, who was both the 8th & 17th Prime Minister of Japan; he championed a spirit of “Resistance to authority.”

<Facts as of 2018.5.1>

- 13 Undergraduate Schools / 20 Graduate Schools
- Student body: 50,221
- (Bachelor: 41,965 Master/Ph.D: 8,256)
- Faculty body: 5,468



Shigenobu OKUMA



WASEDA UNIVERSITY





WASEDA UNIVERSITY

Waseda Alumni

610,000

all over the world

- 7 Prime Ministers of Japan
- Founders, CEOs of first-class companies (SONY, CASIO, SAMSUNG, UNIQLO, etc.)
- Top athletes and authors



Masaru IBUKA
Founder (SONY)



Kun-Hee Lee,
Chairman
(SAMSUNG)



Tadashi YANAI
CEO (UNIQLO)



Shizuka ARAKAWA,
Figure Skater
(Gold Medalist)



Haruki MURAKAMI
(Novelist)



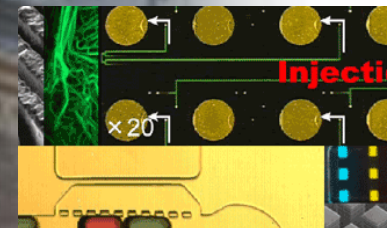
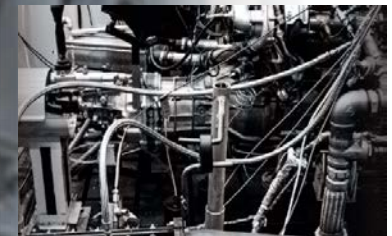
Academics and Research Institutes

10 Faculties (13 Undergraduate Schools / 20 Graduate Schools)

- Political Science and Economics
- Letters, Arts and Sciences
- Education and Integrated Arts and Sciences
- Science and Engineering
- International Research and Education
- Law
- Commerce
- Social Sciences
- Human Sciences
- Sport Sciences

9 Research institutes

- Future Robotics Organization
- Advanced Collaborative Research Organization for Smart Society
- Research Organization for Next Generation Vehicles
- Research Organization for Nano & Life Innovation
- Green Computing Systems Research Organization
- Organization for Islamic Area Studies
- Organization for Regional and Inter-regional studies
- Comprehensive Research Organization
- Organization for University Research Initiatives





Waseda University Today

Excellence in Education and Research

- **One of the top universities** receiving major government research grants
- **13** undergraduate and **20** graduate schools
- **28** libraries, **5.6** million books

Most International University in Japan

- Over **7,000** international students (of **50,000** students) – No.1 in Japan
- Over **700** partner institutions across **81** countries and **9** offices overseas
- **500** English-taught credited courses in **7** undergraduate and **13** graduate schools

Attractive and Dynamic

- **No.1.** in name recognition among high school students (Recruit Corp. survey)
- About **100,000** applications for undergraduate admissions per year
- **600,000** alumni worldwide, ranked **20th** in Global Executives (Alma Mater Index)

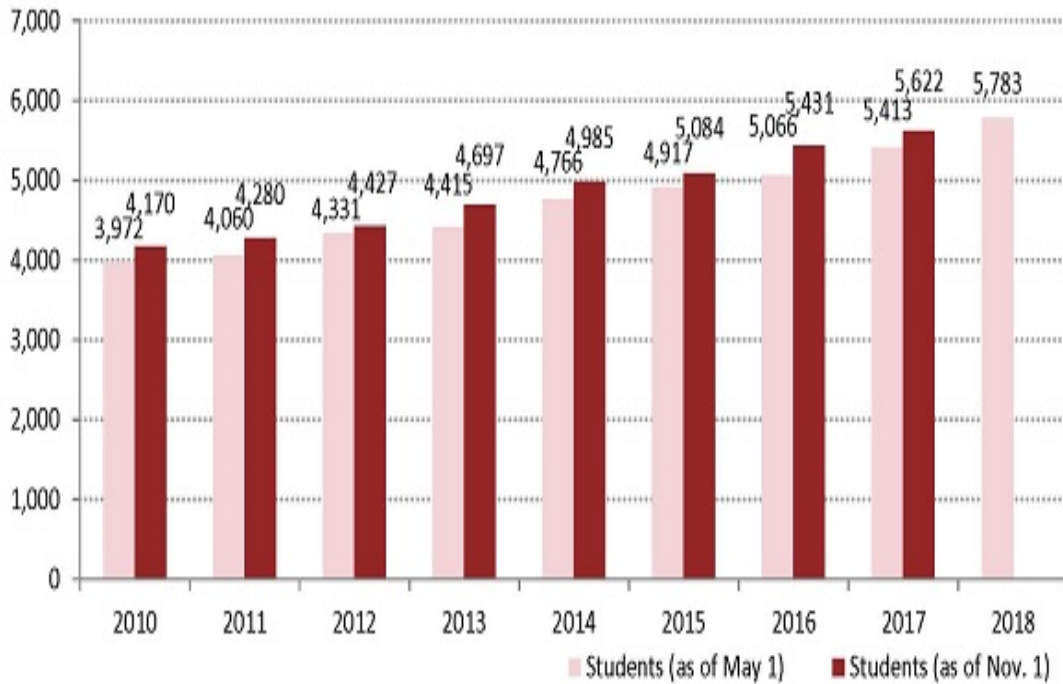


International Students in Waseda

Top 10

Countries and Regions

Number of International Students Enrolled at Waseda University



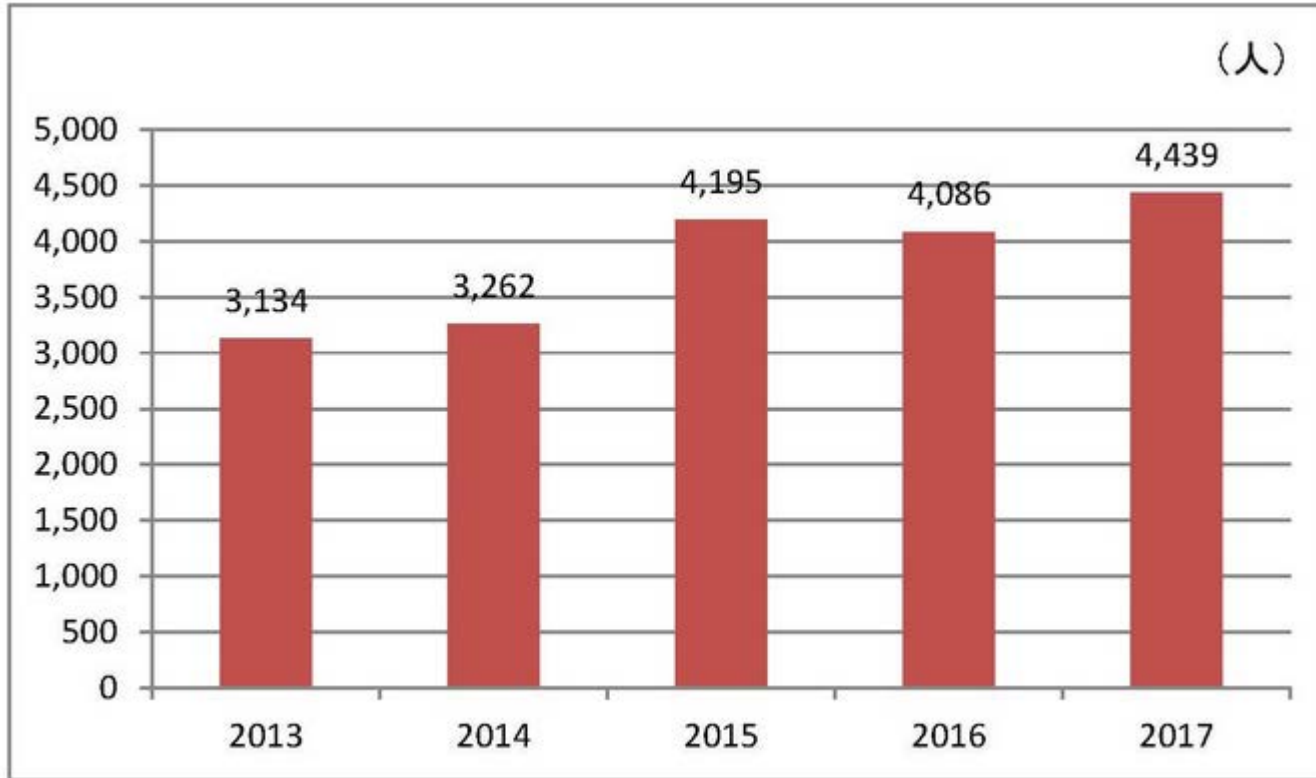
1	China	3,127
2	Korea	819
3	Taiwan	391
4	US	294
5	Indonesia	107
6	Thailand	106
7	United Kingdom	64
8	France	62
9	Viet Nam	61
10	Hong Kong	60
	Others	692
	Total	5,783

As of May 1, 2018



Waseda Students Going Abroad

Number of Waseda Students Going Abroad
(Both long- and short-term programs)



Top 10 Destinations
(2017 Long Term Programs)

1	US	426
2	UK	94
3	Canada	82
4	China	57
5	France	53
6	Australia	47
7	Germany	40
8	Italy	36
8	Sweden	36
10	Spain	34
Total		1,164

As of 2017

Overseas Offices & Global Alliances

***WASEDA Brussels Office
"HUB" for International Joint
Research with European Partners***

Brussels (since 2016)

Beijing

Shanghai

Taipei

Bangkok

Singapore

San Francisco

Global Partnerships

Agreements	684
Partner Institutions	798
Countries	91

APRU
 Association of Pacific Rim Universities

IAU
 INTERNATIONAL ASSOCIATION OF UNIVERSITIES

URA
 Universities Research Association, Inc.

VIU
 Venice International University

APATE
 Asia-Pacific Association for International Education

OECD
 OECD Higher Education Programme

TEM
 Quantitative Techniques for Economics and Management

USJI
 U.S.-Japan Research Institute



Waseda University in World University Rankings

QS World University Rankings #203 in 2018 Graduate Employability #26 in 2018

- Academic Reputation: 69
- Employer Reputation: 89

9 research areas in the global top 100 (2017.3).

Subject	Global Rank	In Japan
Sports-related Subjects	19	1
Modern Languages	41	3
Engineering-Mineral & Mining	50	1
Business & Management Studies	51-100	2
Politics & International Studies	51-100	2
Geography	51-100	3
Linguistics	51-100	3
Sociology	51-100	3
Engineering – Mechanical, Aeronautical & Manufacturing	51-100	6

WHERE WE ARE GOING



“Waseda Goes Global” Plan

For the future, we need comprehensive reforms

Current world status not enough: # 203 in 2018 QS World Univ. Ranking

We need to compete with top level universities in the world

Top Global University Project (TGUP)- The Globalization of Japanese Education and Research by MEXT

- Waseda is selected as one of the 13 top universities (Type A)
- MEXT plans to distribute 400 mil yen (3.5 mil USD) annually to each univ. for 10 years
- The goal is to increase international collaboration and to rank world top 100

“Waseda Goes Global” Campaign with “WASEDA VISION 150”

- It is the top priority initiative across campus
- New President Tanaka is traveling around the world to promote Waseda Goes Global plan as part of the larger strategic package, “Waseda Vision 150”



Waseda Vision 150 and Mission of the University

Mission

Independence of
Scholarship

Practical Application
of Scholarship

Fostering of Good
Citizens

Waseda Vision 150

For the 150th anniversary of the University's establishment in 2032

1. Students of the highest caliber and character who show promise in being able to contribute to the world
2. Research that will ultimately contribute to real world peace and happiness in human society
3. Graduates who will contribute to the public good as global leaders
4. Asia's premier "model university" adaptable to a changing world



“Waseda Goes Global” Initiative

Top Global University Project by the Government of Japan

“Waseda Goes Global” – Plan to Build a Worldwide Academic Network that is Open, Dynamic and Diverse

1. Develop education and research programs to solve global challenges and innovate the future
2. Globalize education and research programs
3. Fundamentally reform the faculty recruitment system and university governance

- Produce 100,000 global leaders within 10 years
- Rank among the world’s top 100 universities in 18 research areas within 10 years





Waseda Goes Global - Targets for 2023

Two Major Objectives for Building Worldwide Academic Network

1. Produce **100,000 Leaders with global perspective** within 10 years
2. Rank among the **World's Top 100 Universities** in 18 areas in 10 years

Global Research

Incoming Visiting Researchers
(over 1-month stay)

810 ▶ **1,600**

Outgoing Visiting Researchers

179 ▶ **500**

Global Education

Students studying abroad

3,076 ▶ **10,650**

International Students

4,415 (8.4%) ▶ **9,165 (19.2 %)**

Strengthen Research Funds (for 2032)*

Outside Research Funds

8.9 billion yen ▶ **20 billion yen**

Donations

2.2 billion yen ▶ **10 billion yen**

Reform for Global Standards

International Faculty

760 (45.3%) ▶ **1,380 (75%)**

Faculty under Annual Salary Systems

99 (5.9%) ▶ **791 (43%)**

* The target set under Waseda Vision 150

Global Education



Enhancement of English Based Degree Programs

1 undergraduate & 4 graduate programs (until 2008)



7 undergraduate & 13 graduate programs

Undergraduate

- International Liberal Studies
- Political Science and Economics
- Social Sciences
- Culture, Media and Society

- Fundamental Science and Engineering
- Creative Science and Engineering
- Advanced Science and Engineering

Graduate

- Political Science
- Fundamental Science and Engineering
- Social Sciences
- International Culture and Communication Studies
- Waseda Business School

- Economics
- Creative Science and Engineering
- Asia-Pacific Studies
- Information, Production and Systems

- Commerce
- Advanced Science and Engineering
- Sport Sciences
- Environment and Energy Engineering



Waseda Students Going Abroad

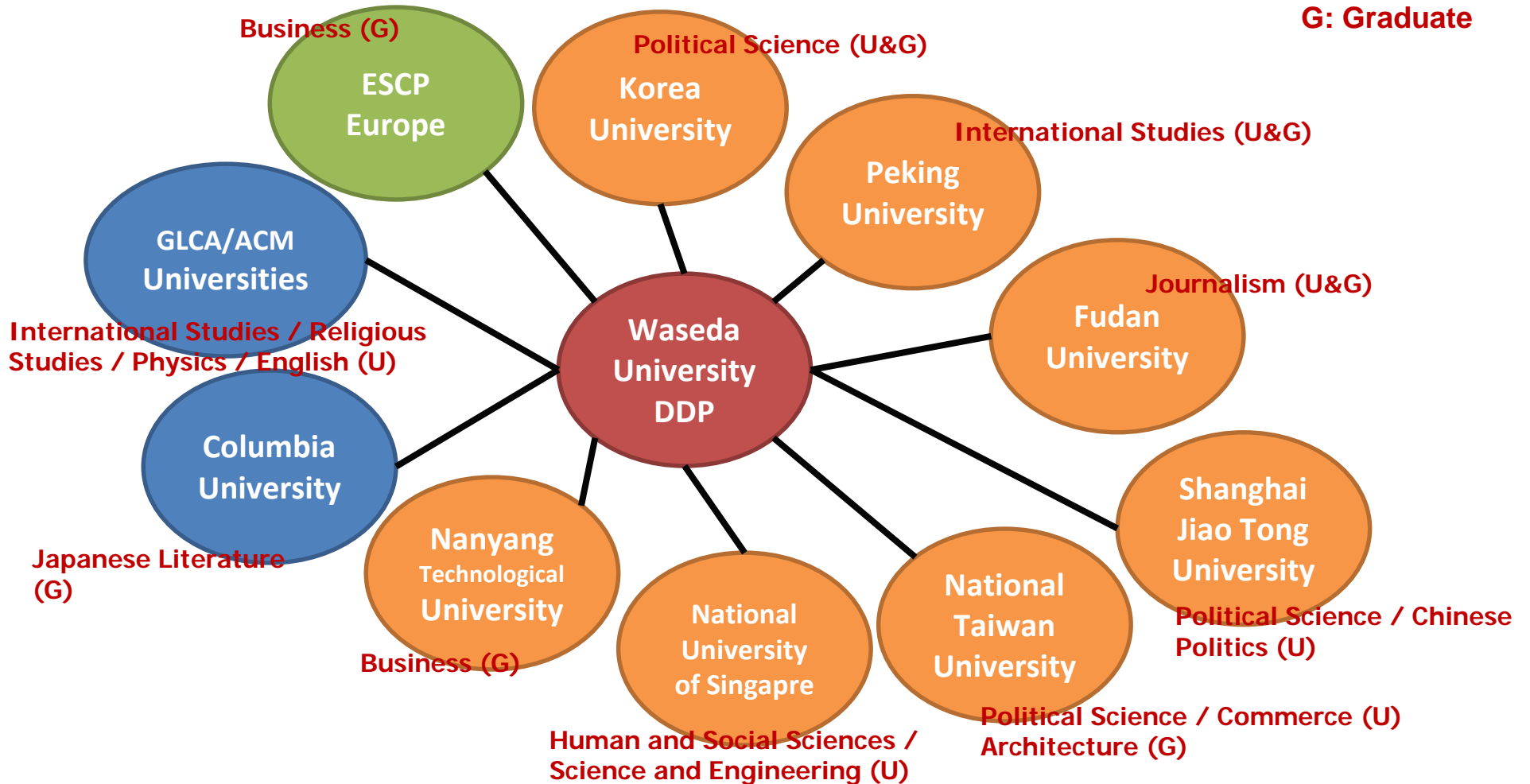
Number of Students by Programs

		2013	2014	2015	2016	2017
Long Term	Exchange Programs	423	559	578	529	624
	Customized Study Abroad Language Focused (CS-L)	473	460	417	360	293
	Customized Study Abroad Regular Academic (CS-R)	131	77	90	82	61
	Double Degree Programs	37	27	24	20	26
	Privately Funded Programs	148	328	372	210	160
	Sub Total		1,212	1,451	1,481	1,201
Short Term	Center for Int'l Education (CIE) Programs	837	820	644	636	610
	Non CIE Programs	247	110	1,371	1,476	1,528
	Seminars and Field Trips	838	881	699	773	1,137
	Sub Total		1,922	1,811	2,714	2,885
Total		3,134	3,262	4,195	4,086	4,439



Development of Double Degree Programs

U: Undergraduate
G: Graduate



Global Research



Previous and Ongoing Projects Funded by MEXT

- AY2003-2007 21st Century COE Program 9 Projects
- AY2004-2008 Super COE Program 9 Projects
- AY2007-2013 Global COE Program 8 Projects
- AY2012-2013 Improvement of Prominent Graduate School 5 Projects
- AY2012- Program for Leading Graduate Schools 2 Programs
- AY2013- Program for Promoting the Enhancement of Research Universities

- Promoting Internationalization of University's Education Project 2 projects AY2005-2008 AY2007-2010
- Project for Establishing University Network for Internationalization (Global 30) 5 Schools, 6 Graduate Schools AY2009-2013
- Re-Inventing Japan Projects 4 Faculties AY2011-
- Go Global Japan Project AY2012-
- Enhancing Development of Global Entrepreneur Program AY2014-
- Re-Inventing Japan Project Campus Asia AY2016-

Top Global University Project 2014~
“Waseda Goes Global” Plan to Accelerate Waseda Vision 150
 An open, dynamic and diverse education and research network



Research that will contribute to real world peace and happiness in human society

1. CREATE NEW FIELDS of EDUCATION and RESEARCH

Creating academic areas that span the humanities, social sciences, and natural sciences; considering the academic fields that Waseda will address in the future.

2. INNOVATIVE RESEARCH and GLOBAL OUTREACH

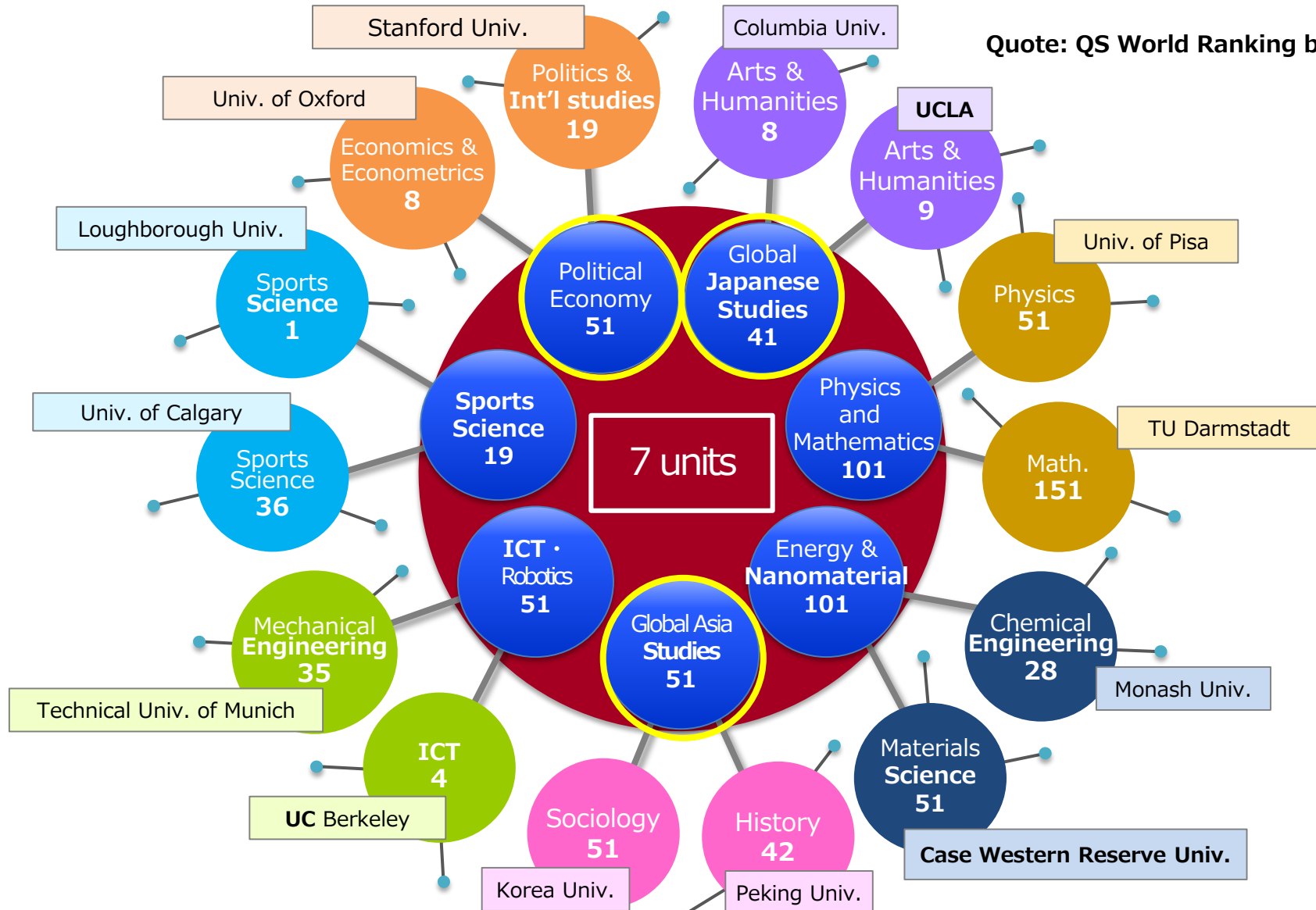
Developing research that is internationally competitive and effectively communicating Waseda's research to the world.

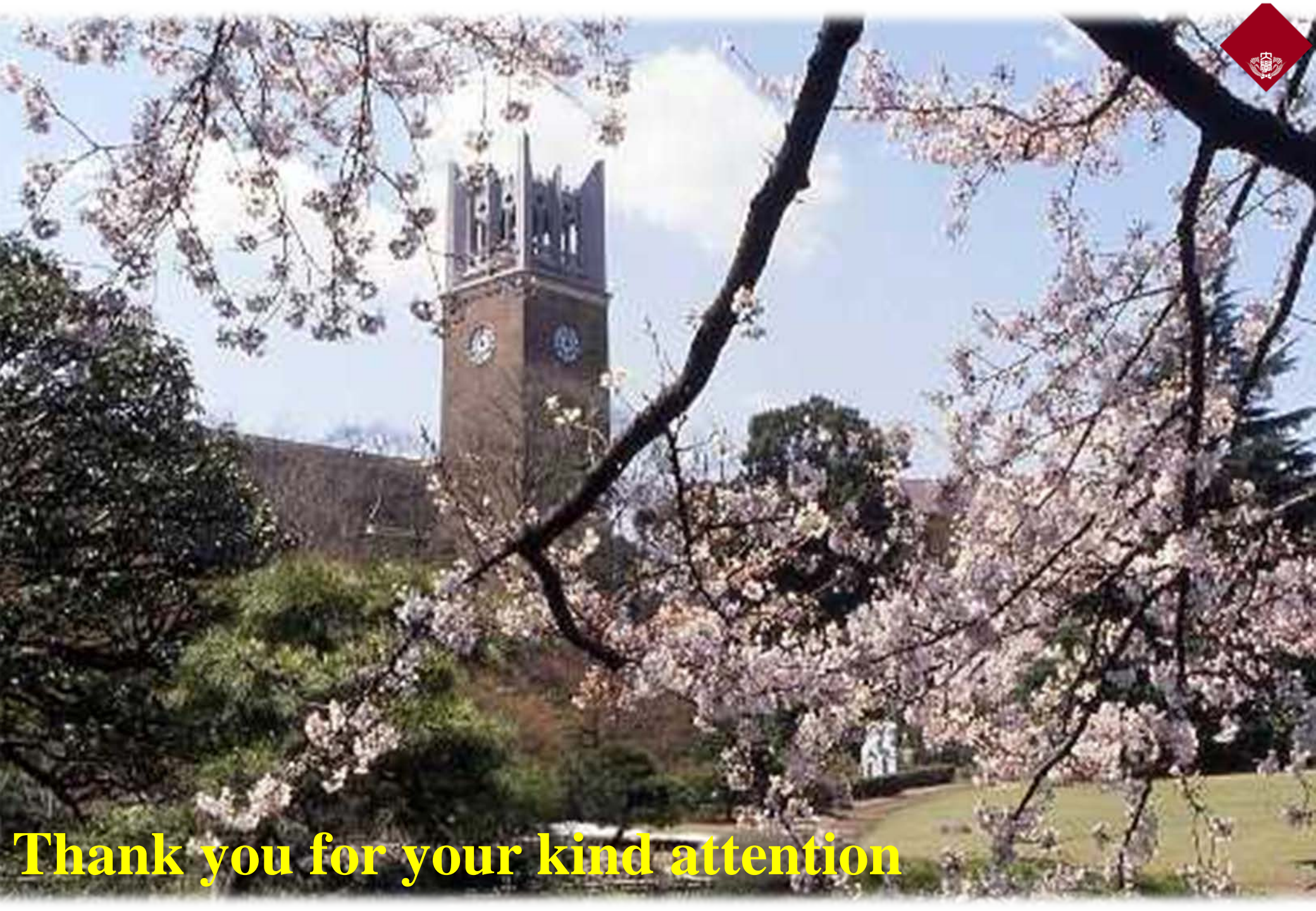
3. GLOBAL RESEARCH UNIVERSITY

Promoting international development by building strategic partnerships with overseas universities and institutions.

7 Strong Research Units

Quote: QS World Ranking by Subject 2017





Thank you for your kind attention